

TARMEKO

TARMEKO - European furniture manufacturer since 1947 - is located in Estonia. The country is well known for its beautiful nature and green landscape - about 50% of the land is covered with natural forest.

WOOD is ancient and magical material - already our ancestors valued its strength, warmth and diversity. Over the 60 years of existence Tarmeko's idea has been to carry the concept of wood design step by step to a higher level by passing from one generation to the other the craftsmanship of our dedicated artisans.

Tarmeko's furniture has always been made out of wood. Birch, beech or oak furniture can be found in almost every home in Europe. It is valued because it can last for centuries, maintaining its quality and fine look.

QUALITY and handcraft is what we value. By using only the best materials we seek perfection in each detail thus giving unique identity to every item we make. By adding value through constant development in design and technologies we have created several brands which carry the concept of timeless shapes and forms.

We unite natural wood and other natural materials like leather and fabric and produce luxurious pieces of furniture for people to indulge and enjoy.

OUR VISION is to create comfort in a timeless shape and form, based on long experience and innovative designs. Today we are one of the few companies in Europe, who produce:

- form pressed and layer glued furniture in birch veneer,
- luxurious sofa designs in modernized techniques.





HISTORY

Tarmeko enterprises are specialised in wood processing and furniture manufacturing. Both, production and management have always been located in Northern Europe, in Estonia.

The company originates from the year 1947. The company name **TARMEKO** withholds three important words: the location of the company in Estonia - the city of **TARTU**, the word "forest" - in Estonian **METS**, and the word "factory" - in Estonian **KOMBINAAT**. This is how our company got its name.

Tarmeko is a family owned company. The father and his two sons have been working in the factory and run the company since their early childhood. Today they all are highly respected businessmen.

Tarmeko has been among the top furniture producers in Estonia and has been given many prestigious awards. Over the years, tarmeko has made many innovative changes in the production and technology.

QUALITY & SAFETY

We are very concerned about the environmental protection and quality of materials. We support the reduction of humanity's ecological footprint by using environmentally friendly materials. We are linked to the FSC © C116426 Chain of Custody and we buy our wood from sustainable resources.

Tarmeko gives up to 20-year-warranty to the products. Our quality control system regulates the internal control procedure. We test our furniture for mechanical safety and examine the products before packaging and delivery.



TOBIAS JACOBSEN is a nostalgic designer, designing everyday objects for a modern era. His ambition as a designer is to create dynamic homes with a sense of nostalgia and function in the form of multi-purpose furniture.

In his work, the idea for a design often springs from studying objects that are characterised by high-quality craftsmanship and history. His interest in design and craftsmanship also springs from his childhood; his childhood home were filled with furniture designed by his grandfather - architect Arne Jacobsen.



DESIGNED BY TOBIAS JACOBSEN



The Curve collection designed by Tobias Jacobsen

Curve is a new design with history. You will see traces in this design of my background and childhood being broad up in my grandfathers design universe. For me it is important to embrace the family in a time where information noise is around you all the time. I think Curve embraces and creates a silent room for gathering. Curve is a wonderful piece of craftsmanship combined with never ending lines which makes it easy to create nice interior design.



The Smooth sofa designed by Tobias Jacobsen



Smooth is another design where craftsmanship is the importance of the design. With the wooden base I wanted to lift the upholstery so it looks light and easy. I wanted to make the upholstery part float over the base with that result that light and shadows create space around the sofa. I wanted to split the base from the upholstery so it looks like the upholstery is displayed by the base. The difference between base and upholstery makes Smooth smooth with continuously horizontal lines. With horizontal lines smooth create spaces which is easy to furnish your room.





Harrow



CLASSIC

Howard





Diana



Silvia





Charlene



Dario

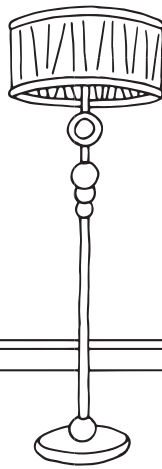
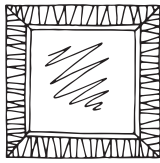
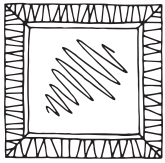




Concorde



MODERN



Cognac





Parma cornersofa





Brandy



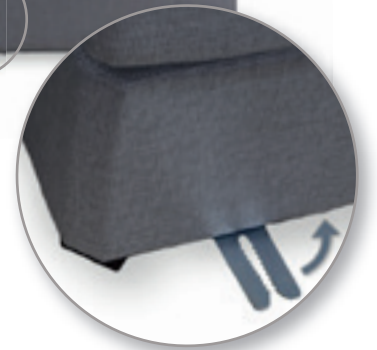




Theo



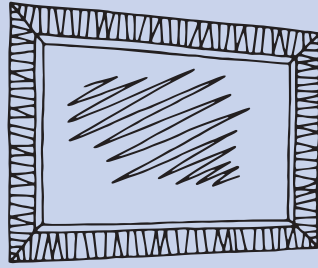
Comforto modulsofa





Modern Nordic sofa





Julia 





Lenna modulsofa



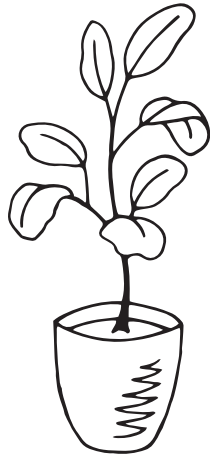
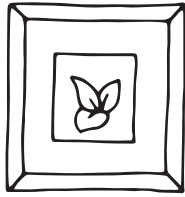
Franke bedsofa





Ronny bedsofa





Ronny bedarmchair

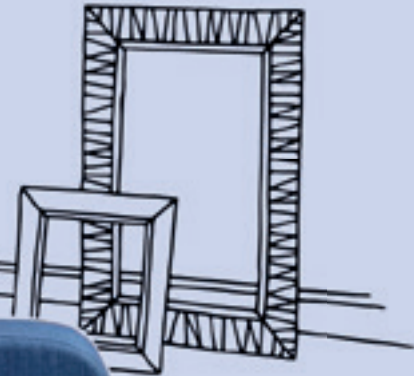




Pelle bed cornersofa



Berlin armchair





Woody





TARMEKO

FACTORY ADDRESS

Soojuse tee 18 • Lohkva
Tartumaa 62207 • Estonia

TARMEKO GROUP WEBSITE

www.tarmeko.ee

TARMEKO UPHOLSTERY FURNITURE

www.cfcollection.eu
www.carlfredrik.eu



Printed by environmentally friendly printinghouse Ecoprint

